

LAYOUT NOTES :

1. PROPOSED CHESAPEAKE STD CO-6 CURB AND GUTTER.
2. PROPOSED CHESAPEAKE STD CO-5 CURB AND GUTTER.
3. PROPOSED CHESAPEAKE STD CO-2 CURB.
4. PROPOSED MONOLITHIC CURB AND SIDEWALK, SEE DETAILS.
5. TRANSITION FROM CO-6 TO CO-5, SEE DETAILS.
6. PROPOSED ONSITE PAVEMENT SECTION, SEE DETAILS.
7. PROPOSED 4" TEMPORARY ASPHALT CURBING.
8. "DO NOT ENTER" MUTCO STD SIGN.
9. "ONE WAY" MUTCO STD SIGN.
10. DUNKIN DONUTS MENU BOARD, MAXIMUM 8 FT TALL AND MAXIMUM 16 SQUARE FT, SEE ARCHITECTURAL PLAN.
11. PROPOSED MONUMENT SIGN, MAXIMUM 12 FT TALL AND MAXIMUM 84 SQUARE FT, SEE ARCHITECTURAL PLAN. (SEPARATE PERMIT REQUIRED).
12. PROPOSED CONCRETE WHEEL STOP, SEE DETAILS.
13. PROPOSED DRIVE THROUGH LAKE.
14. PROPOSED BY-PASS LAKE.
15. PROPOSED 4" WHITE STRIPING, SEE DETAILS.
16. PROPOSED HANDICAP STRIPING, SEE DETAILS.
17. PROPOSED ARROW PAINTING, SEE DETAILS.
18. PROPOSED HANDICAP PARKING SIGNAGE, SEE DETAILS.
19. PROPOSED FIRE LANE, CHESAPEAKE STD. WITH SIGNAGE, PAINTED CURB AND PAVEMENT MARKINGS.
20. SEE ARCH PLANS FOR EXACT BUILDING DIMENSIONS, PLAN NOT TO BE USED ALONE FOR BUILDING LAYOUT.
21. PROPOSED 7" THICK, 4,000 PSI REINFORCED CONCRETE DUMPSTER PAD, SEE DETAILS.
22. PROPOSED 6" DUMPSTER FENCE WITH GATE, SEE DETAILS.
23. PROPOSED STEEL BOLLARDS EMBEDDED IN 3,000 PSI CONCRETE, SEE DETAILS.
24. PROPOSED 10' LANDSCAPE BUFFER F.
25. PROPOSED 4" THICK, CONCRETE STOP, 3,000 PSI, COORDINATE WITH ARCHITECTURAL PLAN.
26. CURB WIPE DOWN, SEE DETAILS.
27. PROPOSED "NO PARKING FIRE LANE" SIGN.
28. PROPOSED 15' LANDSCAPE BUFFER F.
29. PROPOSED 12'X35' LOADING SPACE.
30. PROPOSED CHESAPEAKE STD HR-1A.
31. PROPOSED PRIVATE NON-EXCLUSIVE CROSS RECIPROCAL INGRESS/EGRESS EASEMENT.
32. R1-1 STOP SIGN.
33. 2' WIDE MONOLITHIC 6" HIGH CONCRETE MEDIAN. SEE DETAILS.
34. CHESAPEAKE STANDARD CO-10A.
35. R4-7 MEDIAN SIGN.
36. 5' AWNING OVERHANG.
37. PROPOSED 4" THICK, CONCRETE SIDEWALK, 3,000 PSI. SEE SW-1 DETAIL.

TS #0475003000540
N/F
SHARRON L. JENSON
(D.R. 5044, PG. 657)

TS #0475003000530
N/F
ALVIN W. & SHARON L. STEWART
(D.R. 5044, PG. 657)

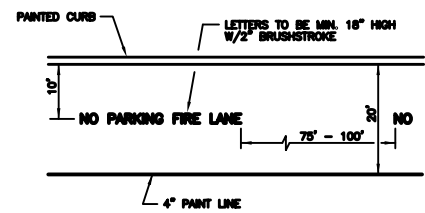
TS #0475003000561
N/F
JAMES H. HARTLEY & BETTY T. WATERS
(D.R. 5044, PG. 657)

TS #0475003000571
N/F
FANNIE PAULINE WALKER
(D.R. 5044, PG. 657)

TS #0475003000581
N/F
DAVID W. IRELAND ET AL
(D.R. 5044, PG. 657)

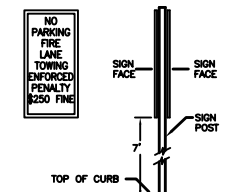
TS #0475003000591
N/F
DONNA S. FAHLEY
(D.R. 5044, PG. 657)

TS #0475003000601
N/F
JAVIER E. & JEANETTEZY GONZALEZ
(D.R. 5044, PG. 657)



FIRE LANE DETAIL
N.T.S.

NOTES:
1. ALL MARKINGS SHALL USE YELLOW REFLECTIVE TRAFFIC PAINT.
2. ALL FIRE LANE MARKING SHALL CONFORM TO THE VIRGINIA MANUAL ON UNIFORM TRAFFIC CONTROL DEVICES AND/OR AS APPROVED BY THE FIRE DEPARTMENT.



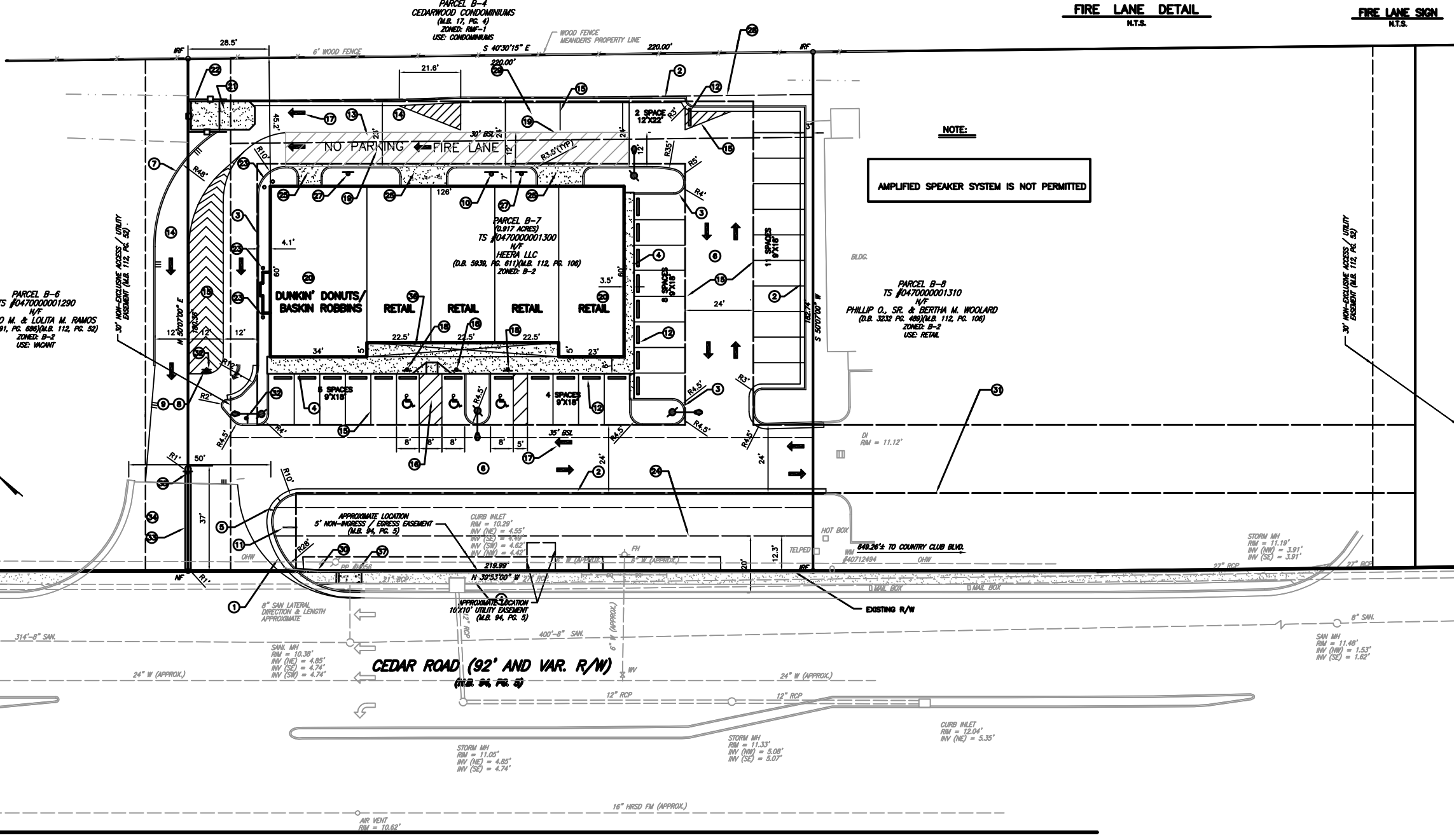
FIRE LANE SIGN
N.T.S.

NO PARKING FIRE LANE TOWING ENFORCED PENALTY \$250 FINE

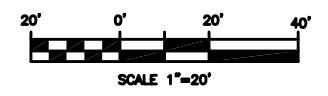
NO PARKING FIRE LANE TOWING ENFORCED PENALTY \$250 FINE

LETTERS: TWO (2) INCH "C" SERIES

NOTE: THIS DRAWING IS FOR GUIDANCE ONLY. FOR MORE ACCURATE DETAILS RELATED TO SIGN FABRICATION SPECIFICATIONS REFER TO THE VIRGINIA MANUAL ON UNIFORM TRAFFIC CONTROL DEVICES FOR THE SIGNAGE AND THE SIGNAGE.



NOTES:
THIS PLAN DOES NOT GUARANTEE THE LOCATION OF EXISTING UNDERGROUND UTILITIES. CONTRACTOR TO DETERMINE ACTUAL LOCATION AND DEPTH OF ALL UTILITIES PRIOR TO MOBILIZATION. IF CONFLICTS EXIST, NOTIFY ENGINEER.
BEFORE DIGGING CONTACT "MISS UTILITY" AT 1-800-552-7001.



NO.	DATE	REVISION
1	02.12.07	REVISED PER CITY COMMENTS DATED 12.13.06
2	03.08.07	REVISED PER CITY COMMENTS DATED 03.01.07
3	03.08.07	PLAN APPROVAL DATED 03.30.07

PINNACLE GROUP ENGINEERING, INC.
2808 Old Overlook Road, Suite 8
York, VA 22465
Tel: (703) 434-7794 & Fax: (703) 434-8899
E-mail: info@pinnacleeng.com



DUNKIN' DONUTS/ BASKIN ROBBINS
TS# 0470000001300
MOUNT PLEASANT BOROUGH
CHESAPEAKE, VIRGINIA

LAYOUT PLAN

PROJECT NO.	2008-015
DATE	11-22-08
SCALE	1"=20'
DESIGNED BY	RF
CHECKED BY	RF
DATE	11-22-08
PROJECT NO.	C4