
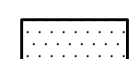


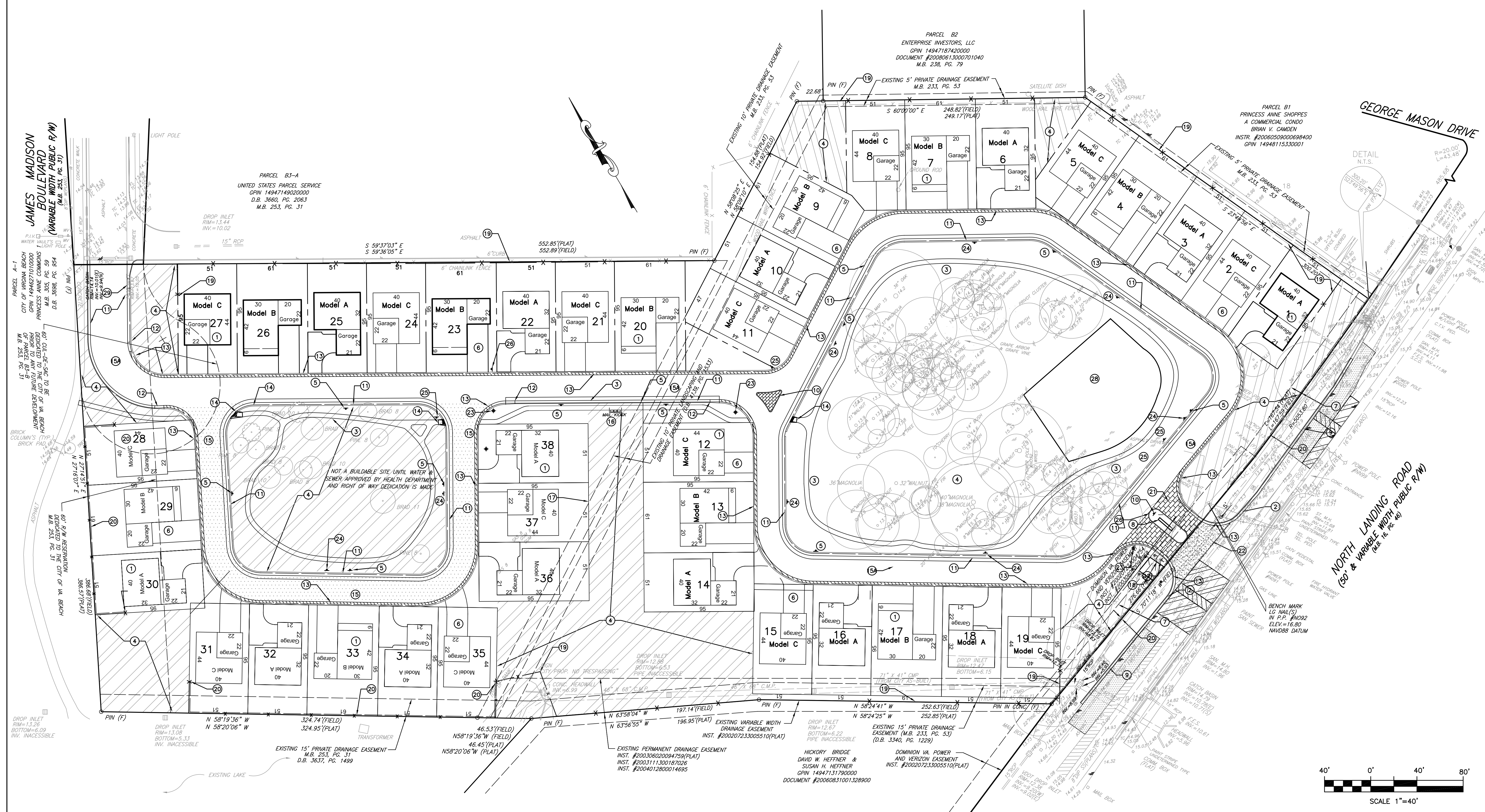
THIS PLAN DOES NOT GUARANTEE THE LOCATION OF EXISTING UNDERGROUND UTILITIES. CONTRACTOR TO DETERMINE ACTUAL LOCATION AND DEPTH OF ALL UTILITIES PRIOR TO MOBILIZATION. IF CONFLICTS EXIST, NOTIFY ENGINEER.
BEFORE DIGGING CONTACT "MISS UTILITY" AT 811.

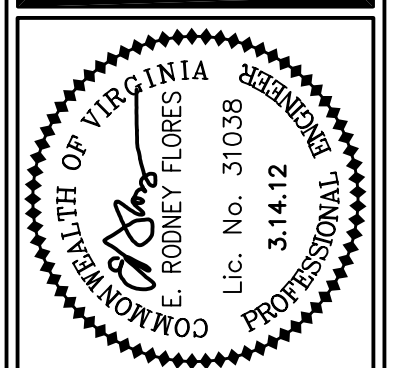
LEGEND

-  PROPOSED OPEN SPACE WITH OPEN SPACE EASEMENT
-  LIGHT DUTY ASPHALT PAVEMENT SEE DETAIL

LAYOUT NOTES :

1. SEE ARCHITECTURAL PLANS FOR EXACT BUILDING DIMENSIONS & DETAILS.
2. TRANSITION FROM CG-6 TO ROLL TOP CURB & GUTTER, SEE DETAIL.
3. 4' WIDE CONCRETE SIDEWALK, 4" THICK, 3000 PSI, SEE DETAILS.
4. PROPOSED OPEN SPACE WITH PRIVATE OPEN SPACE EASEMENT.
5. FIRE LANE WITH SIGNAGE, SEE DETAILS.
6. PROPOSED 3,000 PSI CONCRETE DRIVEWAY.
7. PROPOSED 10' LANDSCAPE BUFFER, SEE LANDSCAPE PLAN.
8. PROPOSED DEVELOPMENT SIGN, SEE ARCHITECTURALS.
9. PROPOSED VDOT CG-6 CURB AND GUTTER, SEE DETAILS.
10. PROPOSED VDOT CG-2 CURB, SEE DETAILS.
11. PROPOSED ROLL TOP CURB AND GUTTER, SEE DETAILS.
12. TRANSITION FROM ROLL TOP CURB AND GUTTER TO REVERSE ROLL TOP CURB AND GUTTER, SEE DETAILS.
13. REVERSE ROLL TOP CURB AND GUTTER, SEE DETAILS.
14. PROPOSED VDOT CG-12 WITH TRUNCATED DOMES, SEE DETAILS.
15. LIGHT DUTY ASPHALT PAVEMENT SECTION, SEE DETAILS.
- 15A. HEAVY DUTY PAVEMENT SECTION, SEE DETAILS.
16. MAILBOX KIOSK, SEE ARCHITECTURALS.
17. PROPERTY LINE TO BE VACATED.
18. PROPOSED 15'x15' PUBLIC UTILITY EASEMENT.
19. PROPOSED 6' TALL WHITE VINYL PRIVACY FENCE, SEE DETAILS.
20. PROPOSED 1' PUBLIC NON INGRESS/EGRESS EASEMENT.
21. PROPOSED STAMPED ASPHALT.
22. PROPOSED VDOT CG-9D ENTRANCE, SEE DETAILS.
23. PROPOSED "STOP" SIGN WITH STREET NAME BLADES.
24. PROPOSED "ONE-WAY" SIGN.
25. PROPOSED "DO NOT ENTER" SIGN.
26. "NO LEFT TURN" SIGN.
27. PROPOSED 4' WHITE VINYL PICKET FENCE, SEE DETAILS.
28. PROPOSED BIORETENTION BMP, SEE GRADING PLAN, LANDSCAPE PLAN AND DETAILS.
29. TRANSITION FROM ROLL TOP CURB & GUTTER TO CURB, SEE DETAIL.



<p>PINNACLE GROUP ENGINEERING, INC. 445 N. Battlefield Blvd, Suite R Chesapeake, Va. 23320 (757) 424-7724 & Fax: (757) 424-5666 E-mail: rflore@pinnaclegrp.com</p>	<p>group, inc.</p>
	<p>COURTHOUSE GREEN</p>
<p>PROJECT NO. 2011-021 SCALE 1" = 40' DATE 03.14.12 DRAWN BY PG CHECKED BY ERF</p>	<p>LAYOUT PLAN</p>
<p>PROJECT NO. 2011-021 SCALE 1" = 40' DATE 03.14.12 DRAWN BY PG CHECKED BY ERF</p>	<p>C3 3 OF 14 SHEETS</p>